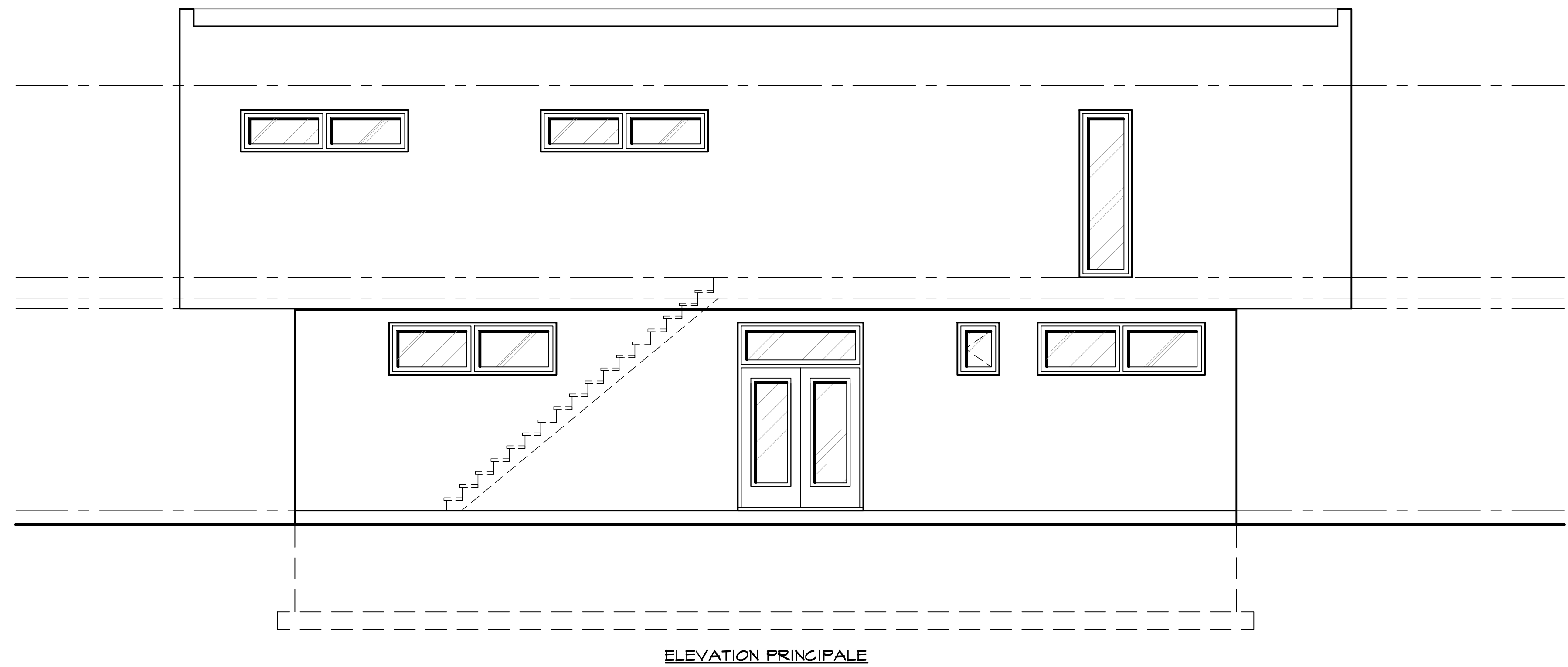
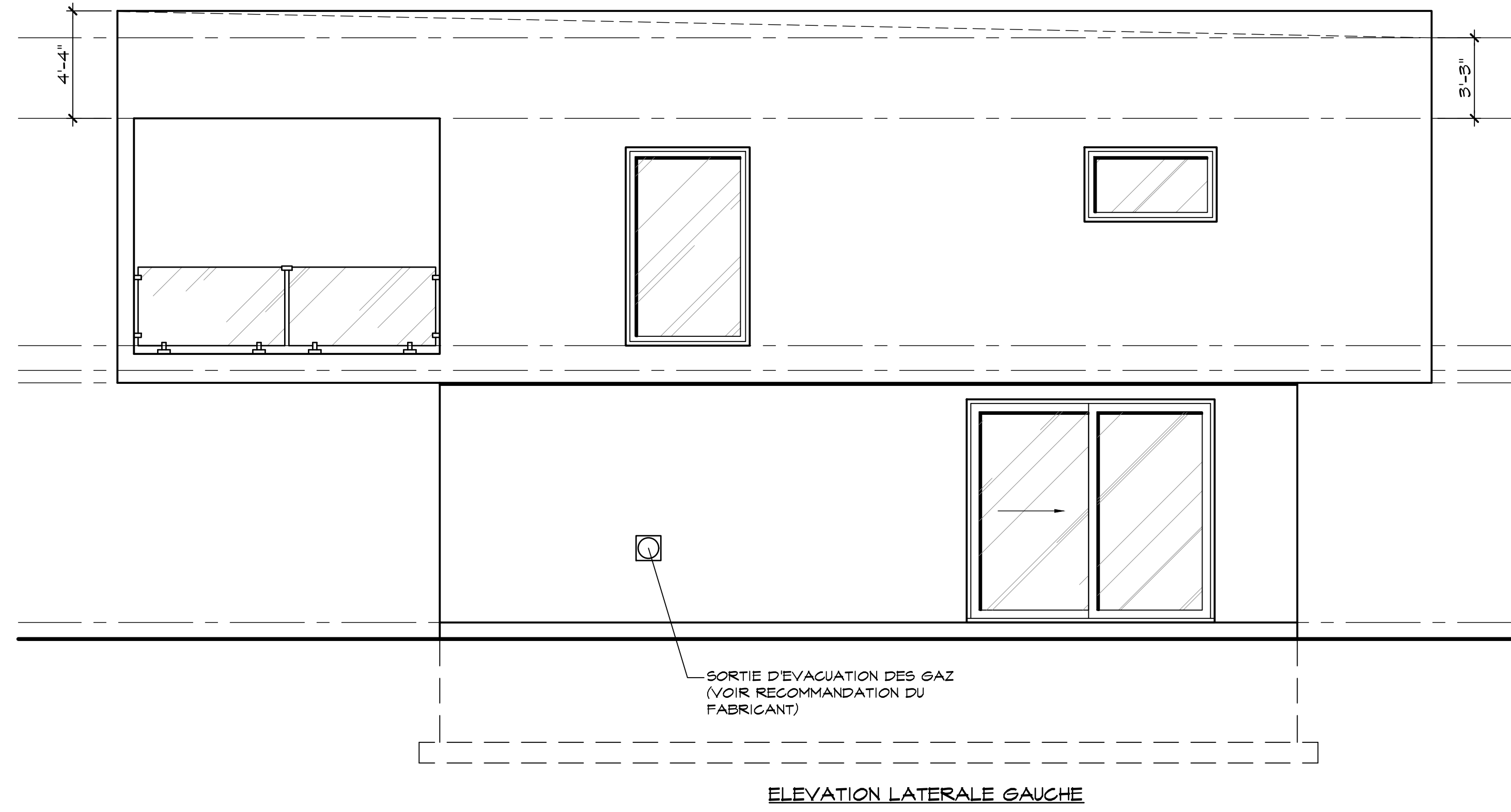
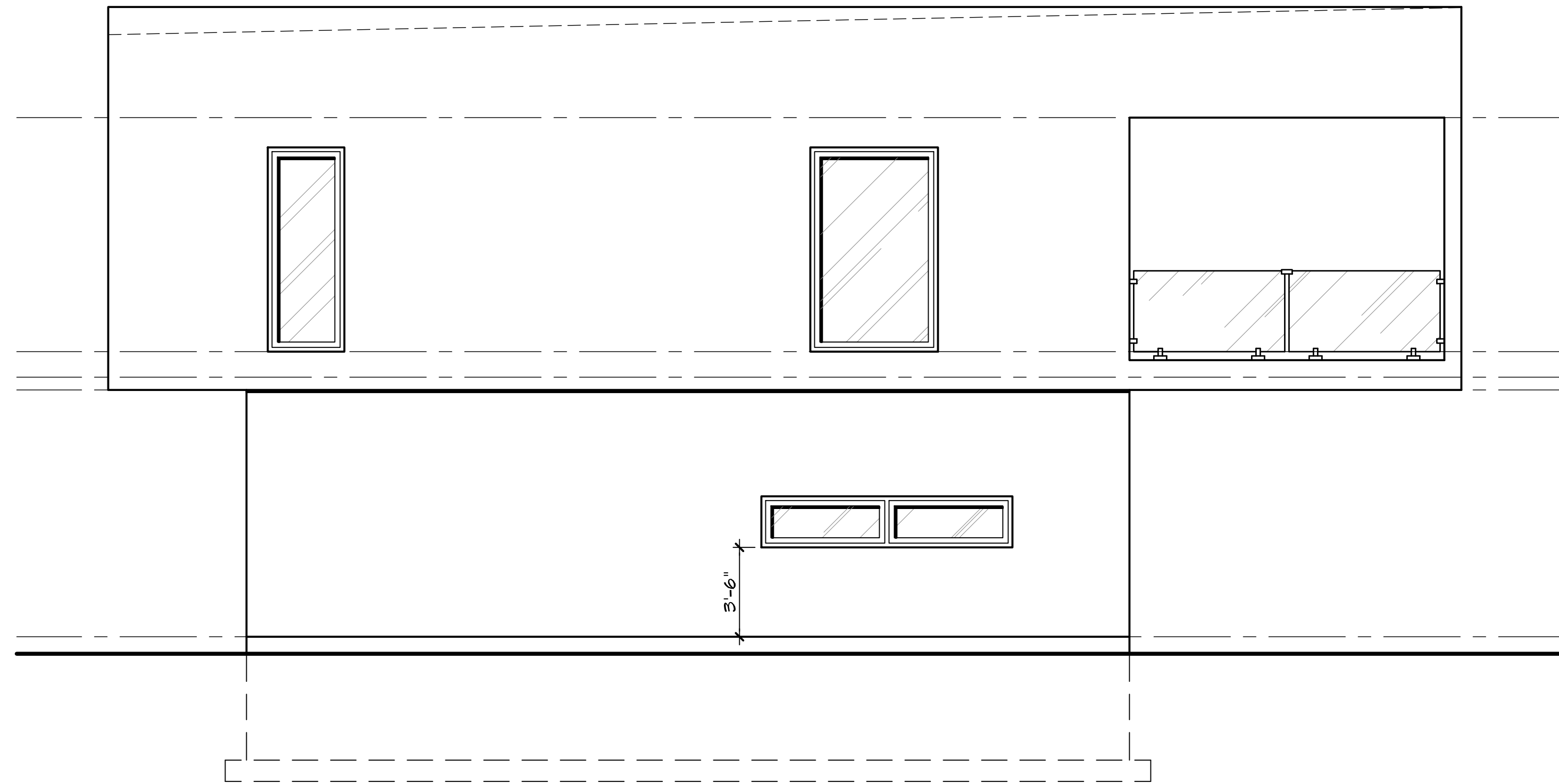
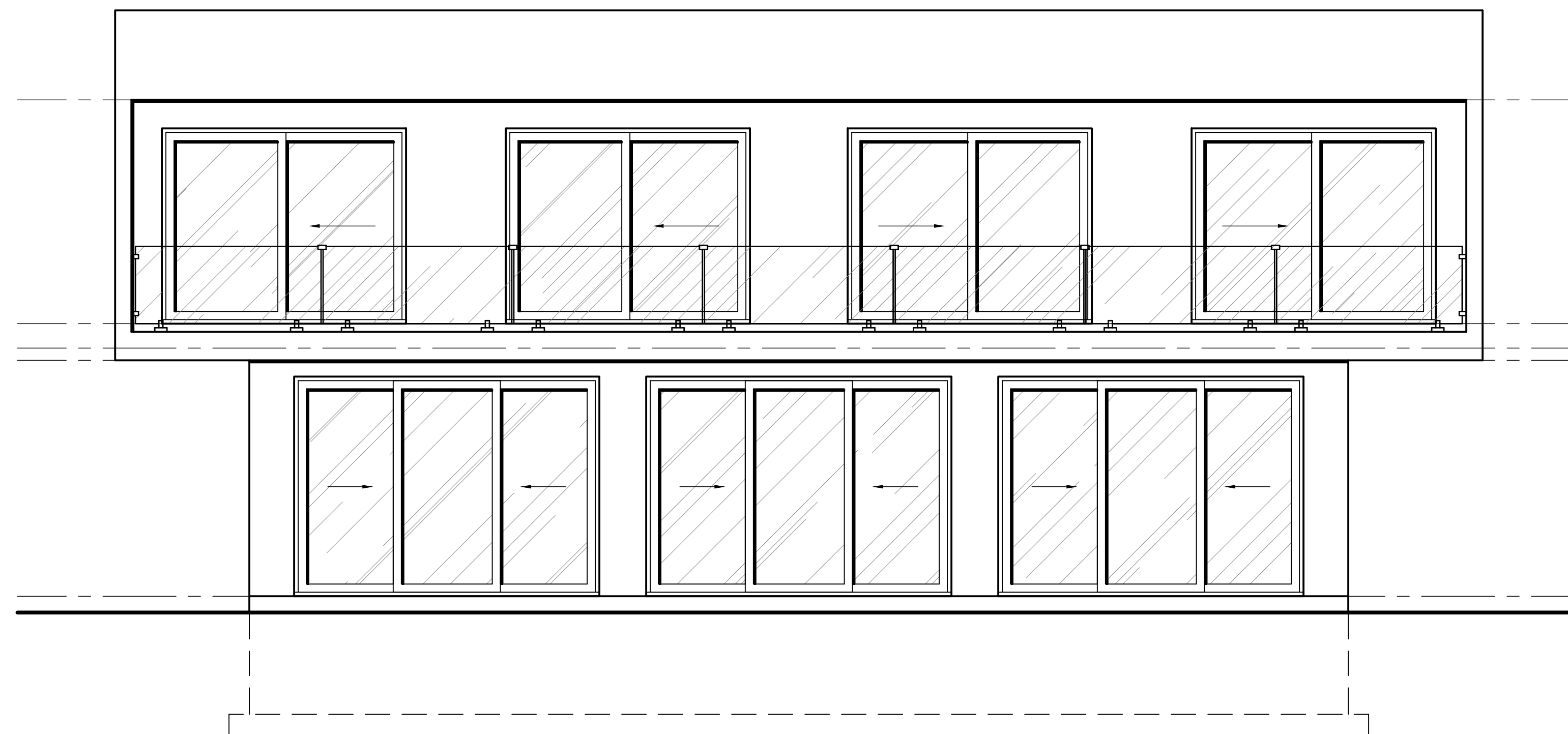


NESTOR - 4 bedrooms/4.5 bathrooms  
3,796 SF/PI.CA

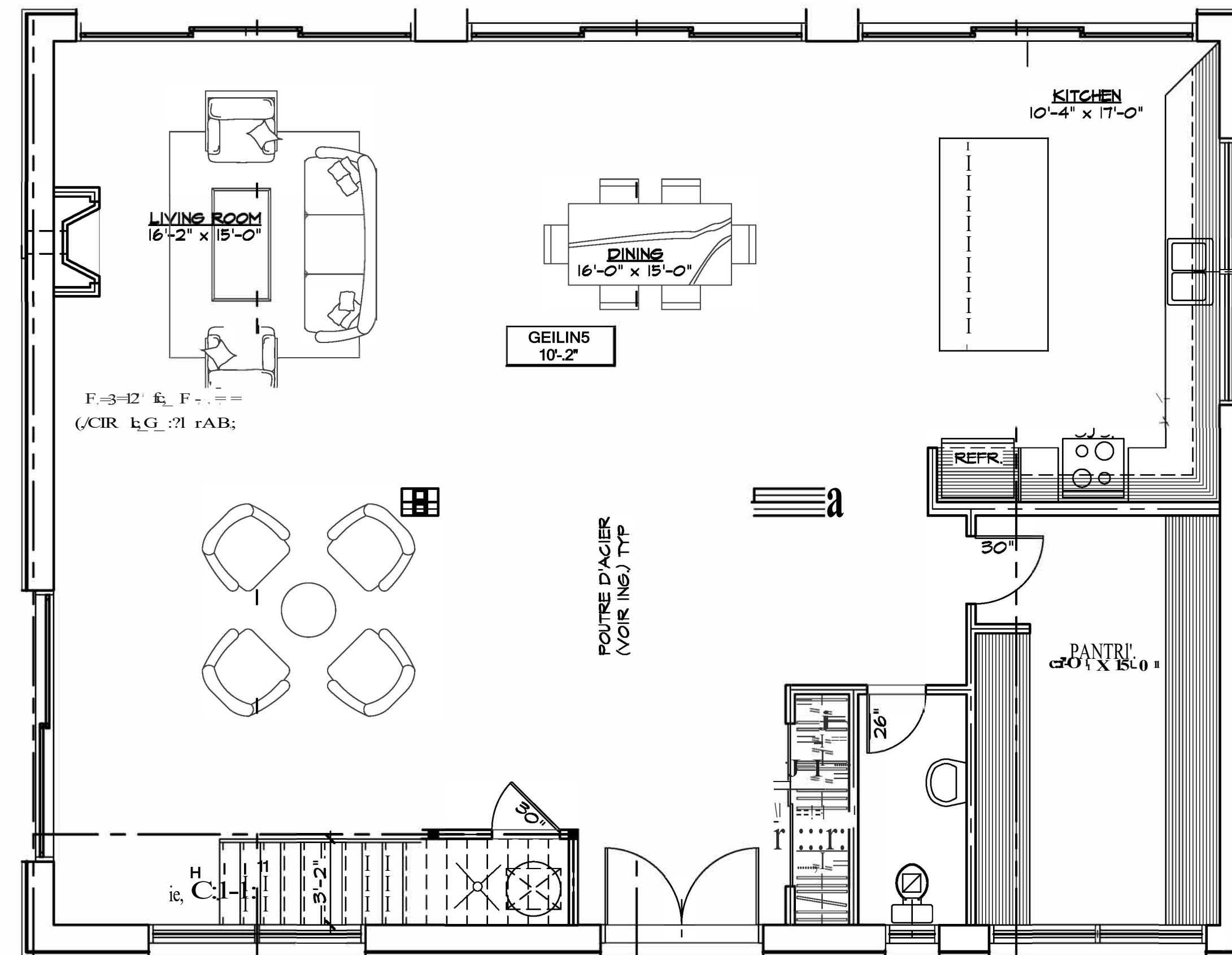


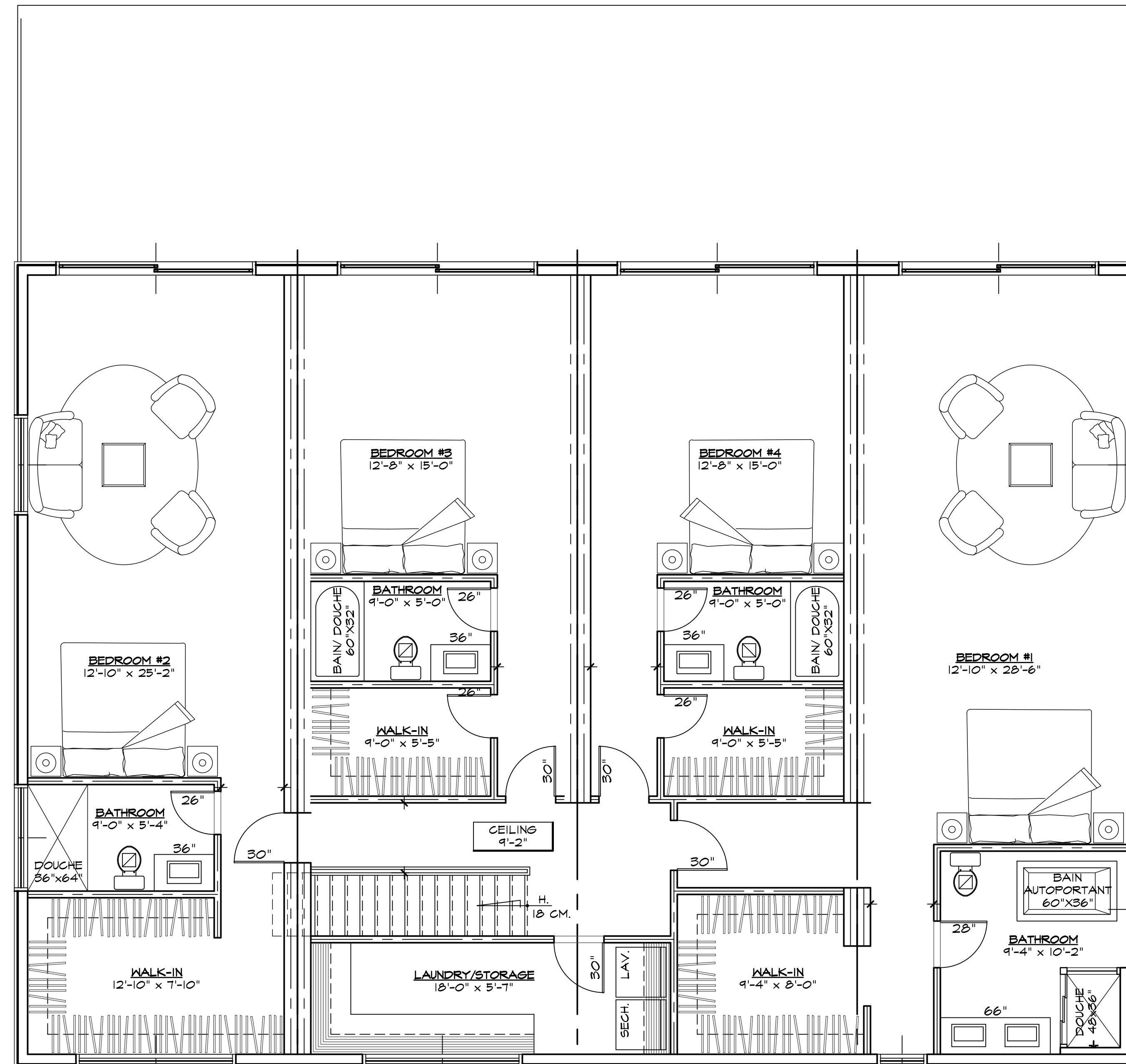


ELEVATION LATÉRALE DROITE



ELEVATION ARRIÈRE





**PLAN DE L'ETAGE**  
 SUP.: 2 206 pl.ca + ESCALIER 34 pl.ca.  
 TOTAL SUP.: 2 240 pl.ca.  
 (A PARTIR DES MURS EXTERIEURS)